

cubert

CUBERT

Personal light with  
integrated mains  
and USB charging



reddot award 2015  
honourable mention



## Introducing Cubert.

Cubert is an elegant personal LED light with integrated mains and USB charging.

Cubert provides power for personal devices in an integrated form factor – the arrangement of light, USB and mains has never been achieved before in such a compact offering.

Cubert has the ability to power and charge via two mains sockets and also includes two smart charging USB ports.

Cubert also comprises an intricate high quality LED light with a touch-sensitive dimmer. The elegantly designed personal lamp uses high efficiency, long life ultra bright LEDs.

Its unobtrusive design makes it versatile and adaptable in a variety of environments, from desks to breakout areas, from meeting rooms and reception areas and even bedside tables.

Cubert is currently available in two plug variants, Type F (Schuko) and Type G (UK).



## Elegant personal light.

Cubert includes multiple LEDs that are controlled by a touch-activated dimmer.

Cubert has impressive light coverage aided by a head that tilts and rotates, and because Cubert is easy to move and reposition, the user can focus the light to their individual preference, rather than relying on fixed overhead lighting or heavy anglepoise lamps.

The close knit LEDs provide 426 lumens of light, with a lifespan of over 50,000 hours, all controlled by a four stage touch sensitive setting. The Cree LEDs provide a 4000K cool white, glare-free light and an even distribution of illumination, casting a single shadow and giving users a premium quality of light.





## Integrated power.

Cubert provides a charging facility featuring two mains sockets and two smart USB outlets for laptops, tablets, mobile phones and other personal devices.

The inbuilt intelligent USBs recognise the principal device, meaning that if both ports are in use, the first device to be plugged in is given high speed priority charging.

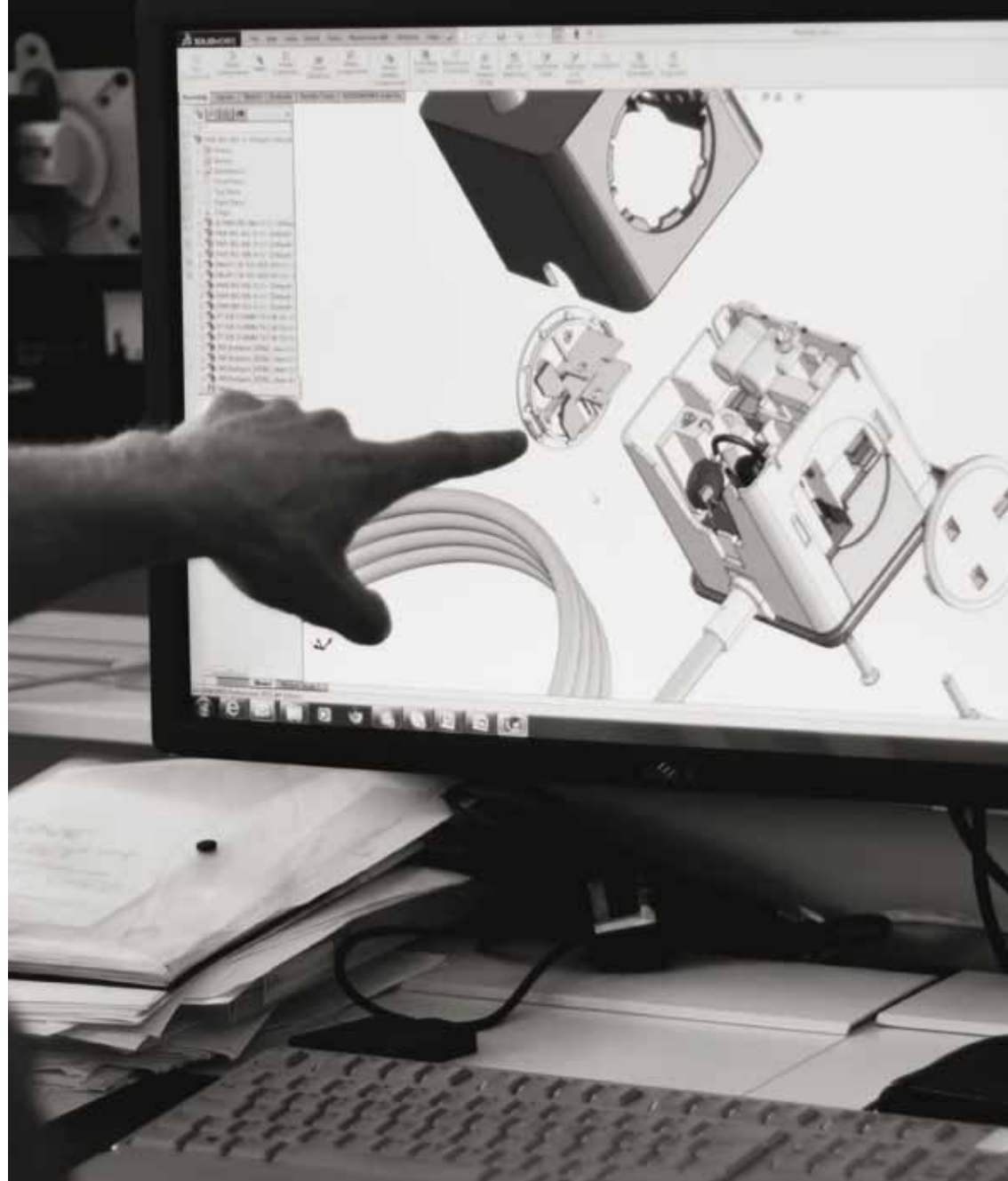
Due to its ultra-compact footprint, Cubert has a minimal impact on surface space and allows users to easily position their lighting and power source rather than being reliant on fixed furniture or ambient lighting. With a refined aesthetic finish and high quality components, Cubert has been rigorously and robustly tested to European and UK standards.



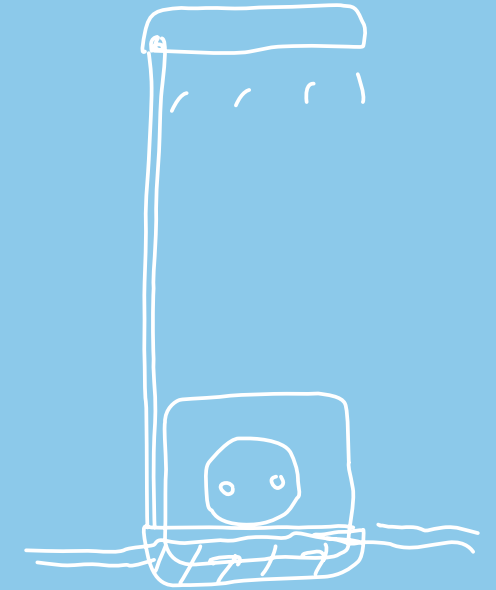


“ The main challenge was to incorporate the electrical requirements within such a compact architecture, that we were able to do this in a refined way while meeting all electrical safety testing just demonstrates our commitment to high end and original design. ”

SIMON BIBBY  
DESIGN DIRECTOR | COLEBROOK BOSSON SAUNDERS



Cubert development models



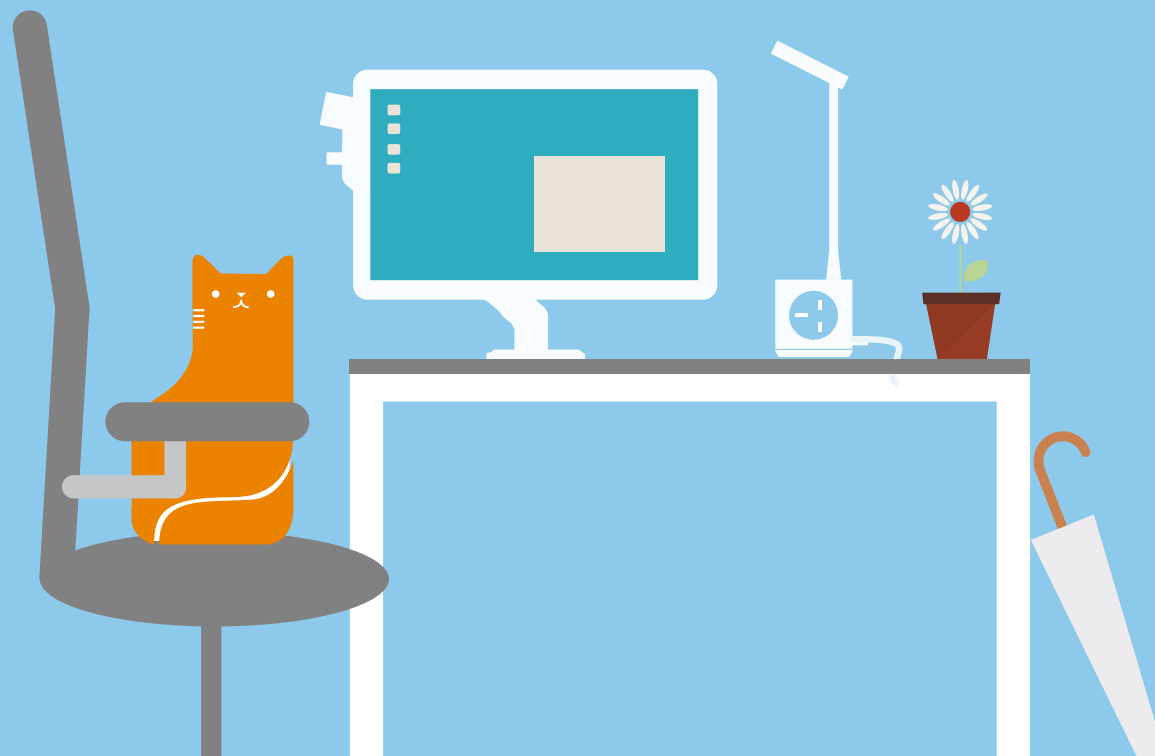
Early Cubert concept sketch





Cubert's understated design allows it to fit seamlessly within the office, hospitality, retail and home sectors.

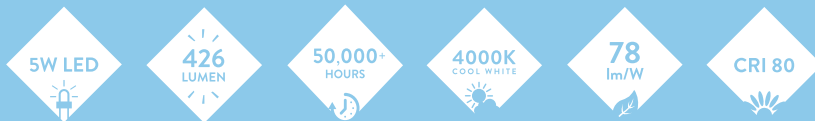
The sleek design, intuitive technology and combination of light and power make a great addition to any public space. And Cubert is our most recent product to receive a Red Dot Award: Product Design 2015.







## LIGHTING



## POWER



\* PWB/002/001 MAINS INPUT  
100-240V - 13A

\* PWB/002/001 MAINS OUTPUT:  
2 x 100-240V - 5A max

info@cbsproducts.co.uk  
+44 (0)207 940 4266  
www.colebrookbossonsaunders.com

 colebrook bosson saunders