

1 Place the top clamp plate on the desktop

2 Fit spacers onto clamp bracket and fit around the worksurface



A Facing up
12-18mm thickness

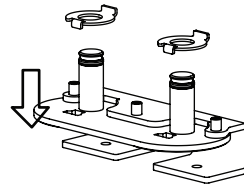


B Facing up
18-25mm thickness

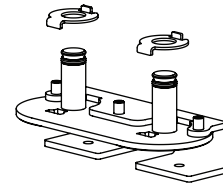


3 Insert screws into clamp bracket, aligning them with the holes on the clamp and tighten

4 Engage or disengage 180° stop as required (default is engaged)



Engaged

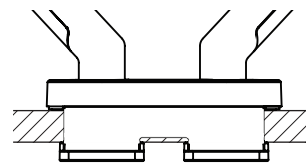


Disengaged

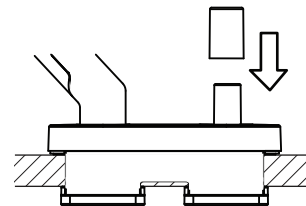
5 Push O-ring and bush onto clamp spigot

6 Install cover onto clamp

7 Mount arms onto clamp (if only one arm is required, place spigot cover over spare spigot for protection)



Two arms



One arm & cap

⚠ WARNING

- Do not use this product for any purpose other than that for which it was designed
- Ensure desk/work surface is suitable to take the weight of the arm/s and monitors
- Supported weight must not exceed the maximum load per arm
- Take care when installing the clamp as fingers could become trapped

⚠ MAINTENANCE AND INSPECTION

- Ensure all screws are tightened and occasionally adjust if needed
- Ensure arm is pushed fully down onto the clamp before installing the monitor(s)
- Clean with a damp cloth, NO solvents

⚠ DISCLAIMERS

- The use of power tools, lever bars or excessive force during the installation, or re-configuration of the product will invalidate your guarantee
- Failure to observe the recommendations in the use, and configuration of these products may affect your guarantee

DYN-013-AS18-INST-B APR2014

